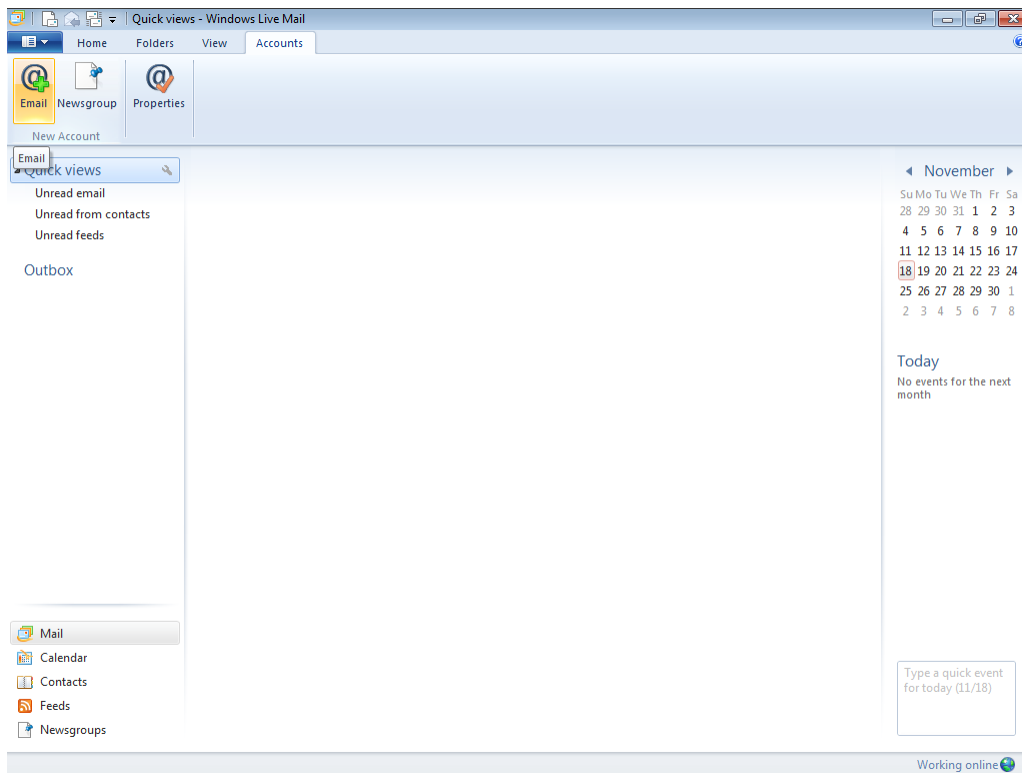
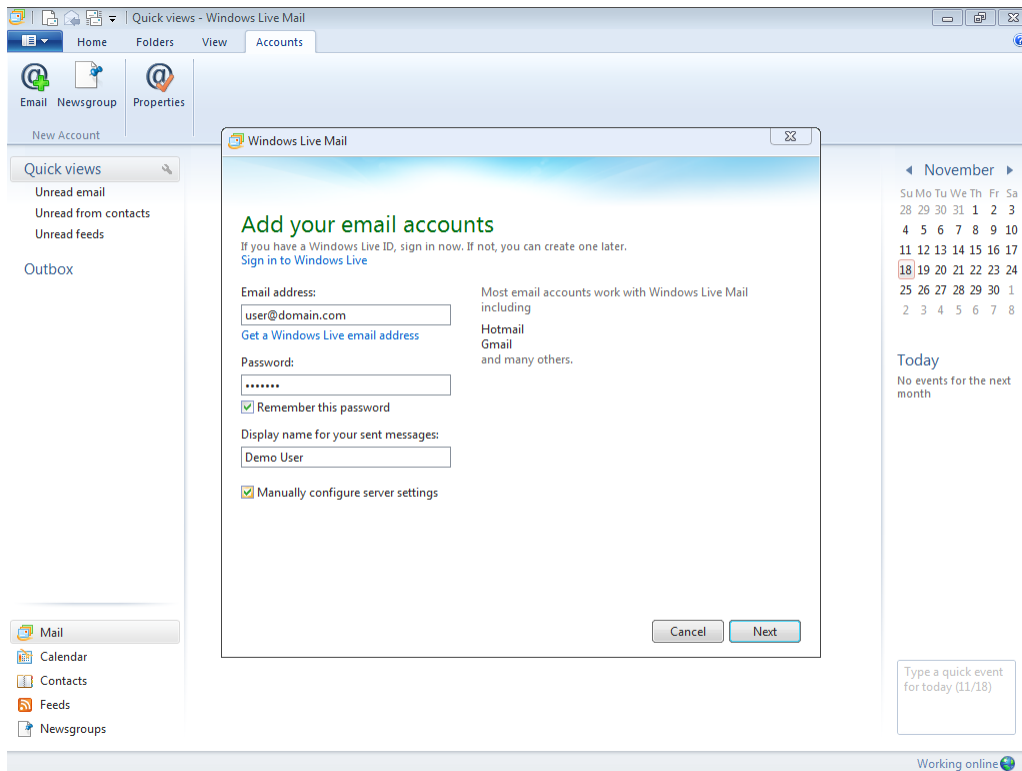


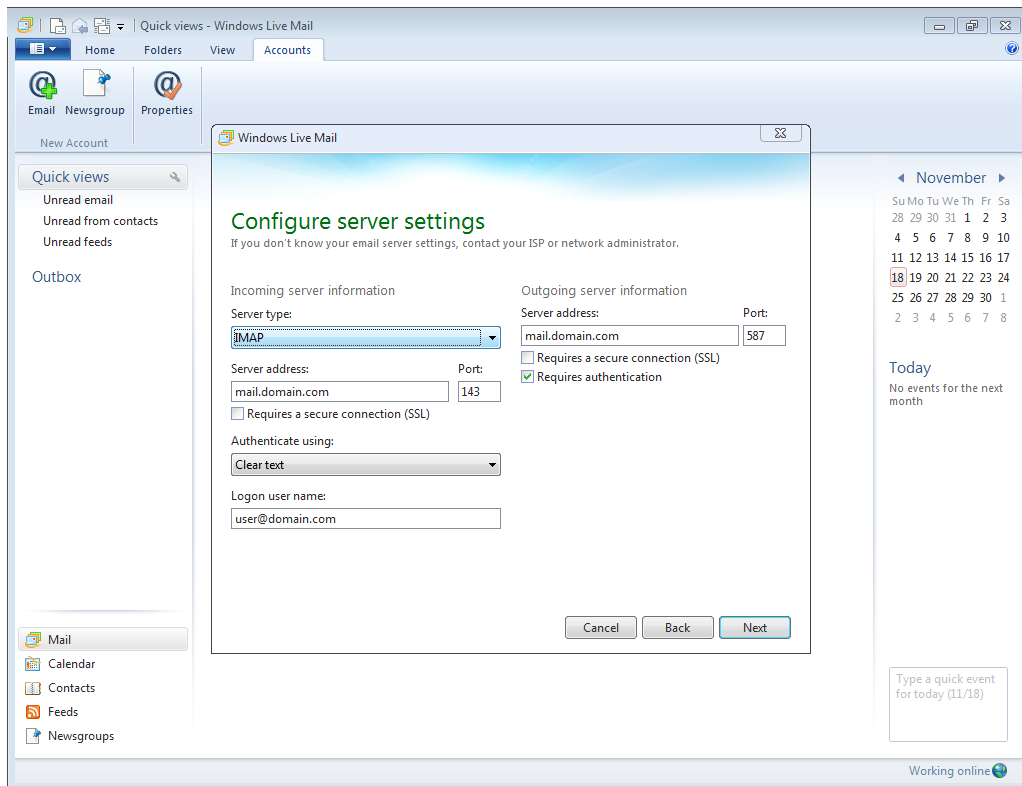
From the main window of Live Mail, click the **Accounts** menu.



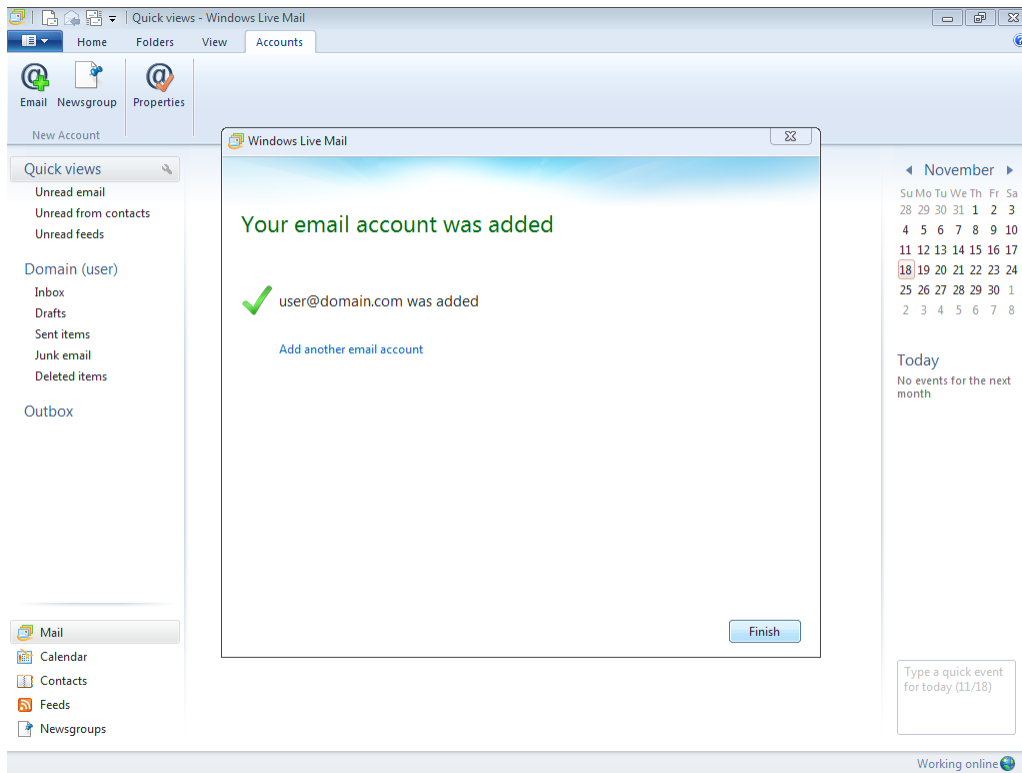
Click **Email**.



Complete all fields replacing the sample data with your domain specific settings. Select **Manually configure server settings** and click **Next**.



Complete all fields replacing the sample data with your domain specific settings. Ensure **IMAP** is selected, the outgoing port is set to **587** and **Requires authentication** is checked. Click **Next**.



Click **Finish** to complete your email account setup.