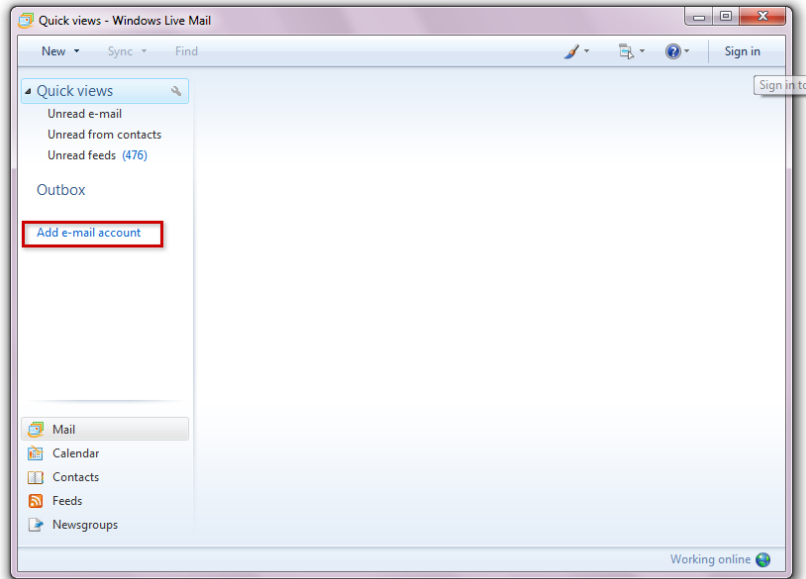


Step 1

Click the Windows **Start** button and type **Mail** in the search box. From the list of results, click **Windows Live Mail** to launch the program.

Step 2

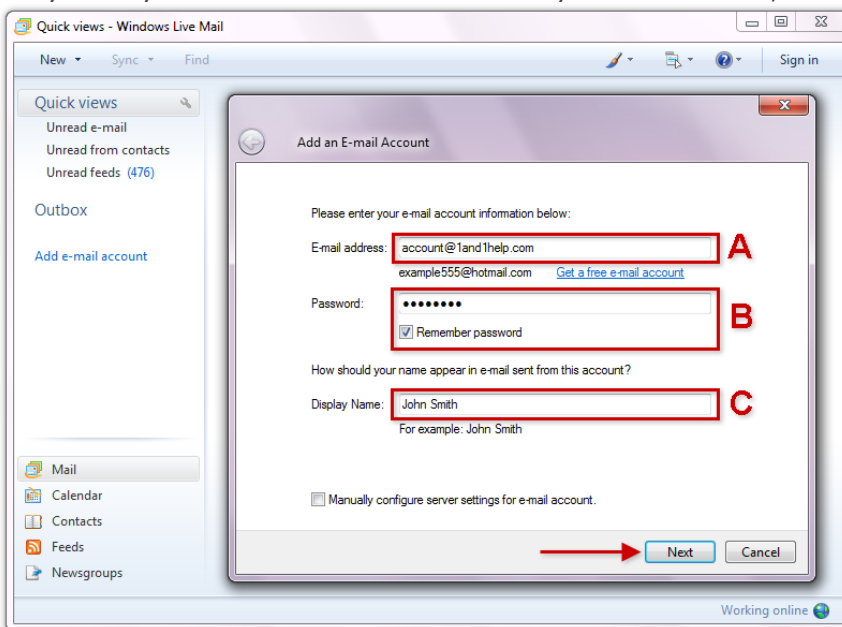
Select **Add e-mail account** from the left-hand side.



Select *Add e-mail account*

Step 3

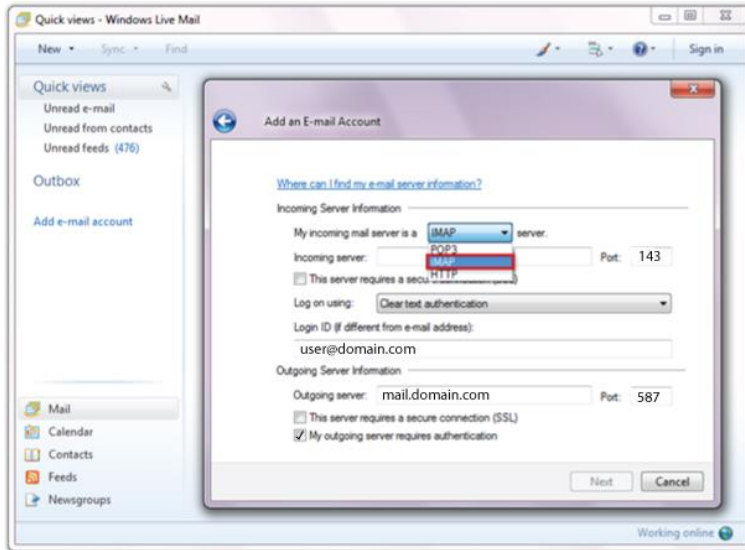
Enter your **full E-mail address (A)**, **Password (B)**, **Display Name (C)** and **check the box for Remember password** if you do not want to enter your e-mail account's password every time you check or send mail. When you are finished, click the **Next** button.



Enter the required information

Step 4

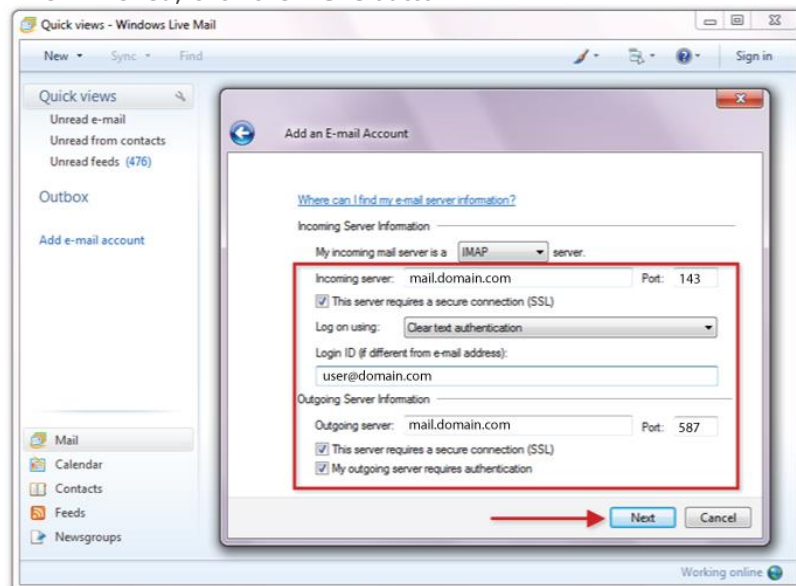
Select **IMAP** from the drop-down box.



Select **IMAP**

Step 5

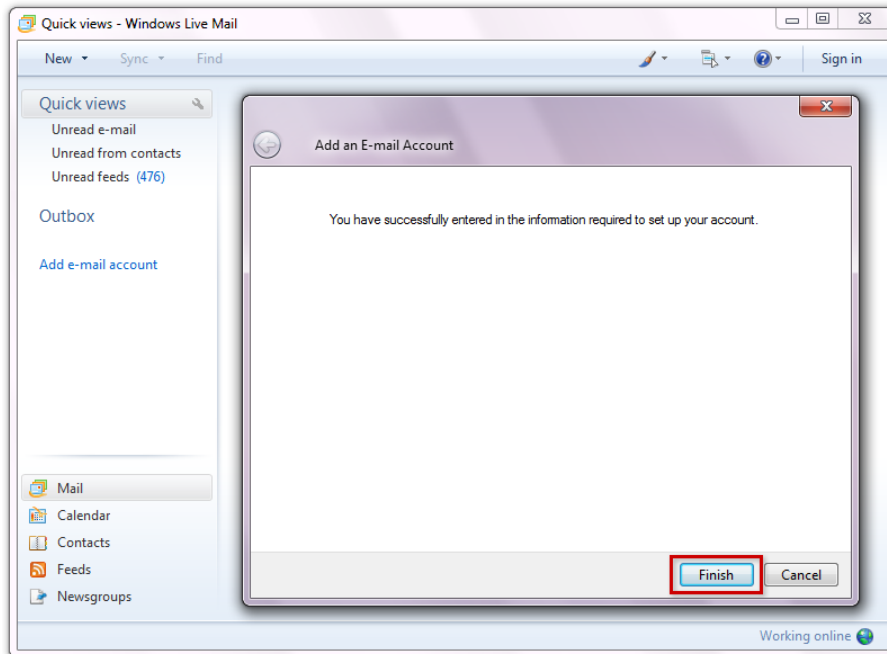
- Enter **mail.domain.com** as the **Incoming server** address.
- Check the box for **This server requires a secure connection (SSL)** and ensure that the Incoming server port is set to **143**.
- Ensure that **Clear text authentication** is selected from the drop-down menus
- Enter **your full e-mail address** in the text box for **Login ID (if different from e-mail address)**
- Enter **mail.domain.com** in the text box for **Outgoing Server**.
- Check the box for **This server requires a secure connection (SSL)** and ensure that the Outgoing server port is set to **587**.
- Check the box for **My outgoing server requires authentication**.
- When finished, click the **Next** button.



Enter the required information

Step 6

Click the **Finish** button.



Click the Finish button